



# Smart Healthcare Solution

Registration  
Outpatient Clinic  
Health Station  
Rehabilitation Center  
Exam Room Solution  
Nursing Station White Board  
Ward Solution



**RiPAC-10P1  
Patient Check-in Kiosk**  
RiPAC-10P1 combines two displays: a full flat 10.1" and an adjustable 5" touchscreen. Also integrated into the system is a built-in thermal printer with auto cut functionality.



**OFT Series  
Real-time Information System/  
Health Center Display**  
Designed with 802.11 b/g/n Wi-Fi and 10/100/1000 Ethernet, allowing stable and rapid Internet connection for data transactions. Also, supports Bluetooth 4.0 technology for shorter distance communications.



**HID-2132  
Medical Workstation/  
Pharmacy Computer**  
With UL-60601-1 4th edition medical certificate and an anti-microbial finish, HID-2132 is ready for medical environment. It supports Full HD and P-CAP multi-touch up to 10 points, giving users an extraordinary visual and touch control experience.



**Goomedi Series  
Medical Display**  
This series of Goomedi's Medical Displays include many flexible visualization options such as switching to multiple monitors in full screen, picture-in-picture, picture-by-picture or in multi-split.



**VNS-10W01  
Room Status Display**  
HID Healthcare Intelligent Display has P-CAP touch screen, compliant IP65 front side and 10.1"/15.6" LED backlight LCD. Also, it can display the working list with 3 different colors of LED lights.



**EBC-05M1  
Digital Bedside Card**  
E Ink can present the patient's information status and hospital data immediately. Also, it reduces paper waste and support general/ emergency status with different color & light.



**RiPAC-10P1-H  
w/camera & VoIP Phone  
Nursing Station Digital Phone**  
With 10 points projective capacitive multi-touch, and 5" adjustable customer LCD display. It supports VoIP phone and camera. Moreover, it integrates NFC compliant with RFID/ Felica.



**Geni-Cart  
Mobile Workstation**  
The Geni-Cart adjusts in height for each user. It has a smooth handle for confident maneuverability and high durability castors which brake quickly. The medical carts can provide a wireless solution, charged in situ or with a power docking system for its Hot Swappable modules.



**Medi-View  
Medical Arms**  
(OR) The Arm for OR has height adjustable 20° to -60° from horizontal, integrated cable covers for easy cable installation. (Bedside) Arch-Swing offers a long reach, perfect balance and maximum vertical and horizontal movement. The Arms can be integrated with the I-Hub wall box or ceiling/floor mounts and can be easily parked away from the patient when not in use.



## Registration and Outpatient Clinic

Patients can simply get the sequence for the clinic and cashier via Patient Check-in Kiosk. This will improve patient experience and offer a more convenient hospital environment.

Patients then check-in in front of the treatment room with Digital Signage System, which can show the current sections, names of doctor and waiting number and is integrated with RFID/NFC smart card reader.



## Health Station and Rehab Center

All of the real-time data like height and weight, blood pressure, and blood sugar levels are uploaded to the health cloud; the patients can check the results via their own devices and the doctor can easily receive the patients' latest health records.

Besides personal health cloud, Avalue provides console systems which can be embedded within fitness equipment. The console systems offer multi OS supported, TV tuner, the Internet, and IoT connectivity services.



## Smart Healthcare Solution

As healthcare needs continue to rise, hospitals are striving to improve patient care and utilize the latest innovation in medical equipment. Avalue keeps on developing the smart healthcare solutions and focuses on working with solutions partners.

Avalue offers a variety of innovative solutions to meet the unique demands of a healthcare facility.



## Exam Room Solution

Avalue's Exam Room Solution has Medical Display, Workstation, Nursing Cart and the Room Status Display.

The Room Status Display shows the occupied state & worklist queue that can help patients aware the sequence. Moreover, it has PCAP multi-touch screen controls and can display the working list with 3 different colors of LED lights.

The Medical Workstation shows the patient's information and their reports immediately. It helps doctors control the exam process effectively.



## Real-time Positioning RTLS ( Real-Time Location System)

Indoor Real Time Location System (RTLS) is a technology that is used to automatically identify and locate objects, assets or individuals in real time. Avalue industrial grade RTLS solutions capture real-time data from targets want to be monitored and turn them into actionable insights.



Avalue provides comprehensive  
**Smart Healthcare Solutions**

that best meet medical, health and healthcare needs.

A New Digital Healthcare Experience  
You Can Trust

Endeavoring to provide a patient-centric healthcare environment, Avalue has taken into consideration everything, from medical personnel to patients, and from software to hardware integration, in order to develop all-round smart medical solutions.

**Smart Ward**

The patient-based service promotes patient's in-patient experience and assists medical staff in offering all-round care

**Nursing Station**

Share data and streamline processes: Workflow Optimizations for paramedic to concentrate on nursing

**Operating Room**

Medical Arm is easily maneuverable to provide the user with the most comfortable position when using the touch screen interface of the terminal.

**Exam Room**

The "medical regulation certified" panel provides clearer images that greatly improves diagnosis precision.

**Registration**

Smart Guidance for Queue Distribution  
Easy and Convenience for Waiting Time Reduction

**Outpatient Clinic**

Sections of the clinic room  
Real-time information system

**Pharmacy**

Connects with HIS or hospital system that offers healthcare professionals more accurate use of drugs. The applications include order entry, patient profiles, and preparation of unit dose cart fill lists.

**Health Station & Rehabilitation**

Health Station provides patients the great environment to control their health and obtain the real-time data of blood pressure test, blood sugar levels, and so on. All of the records are uploaded to the health cloud.



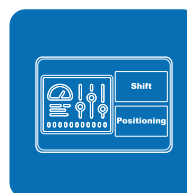
**Smart Nursing Station Solution**

- Improving resource management
- Reducing medical staff workload



**Smart Ward Solution**

- Enhance patients' experience
- Close connection with care providers and patients



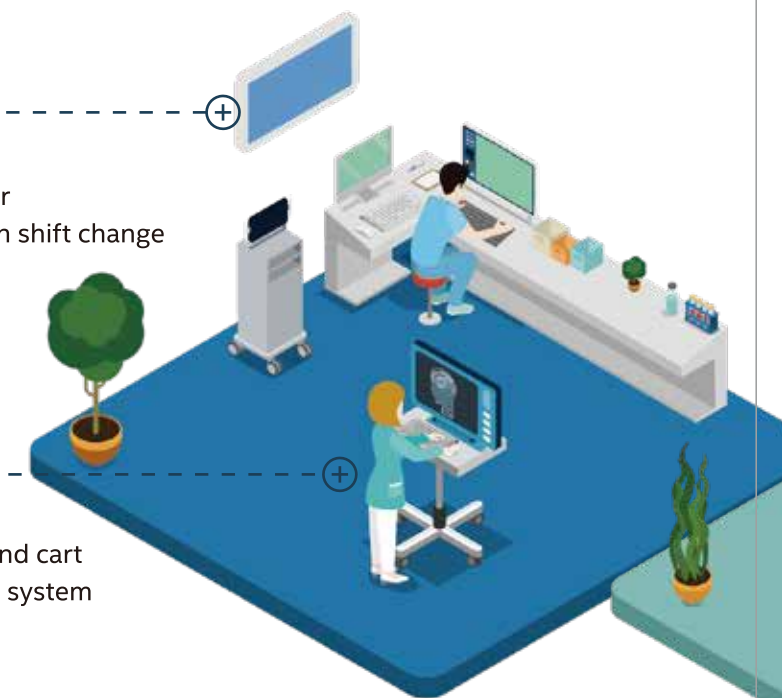
**RTLS Indoor Location and Info Integration Platform**

- Monitor patients' position is simple and clear
- Catch up with assets and information at each shift change
- Staff safety and protection. Get automated and location-aware alerts



**Mobile and Powering Up Workstation**

- Wireless, cordless medical grade panel PC and cart
- Connect to public/private cloud information system
- Easy to clean and infection control friendly



**Enhance Communication and Patients' Experience**

- Connect with care givers, family and friends
- Web camera/VoIP phone supported
- Integrate NFC/RFID



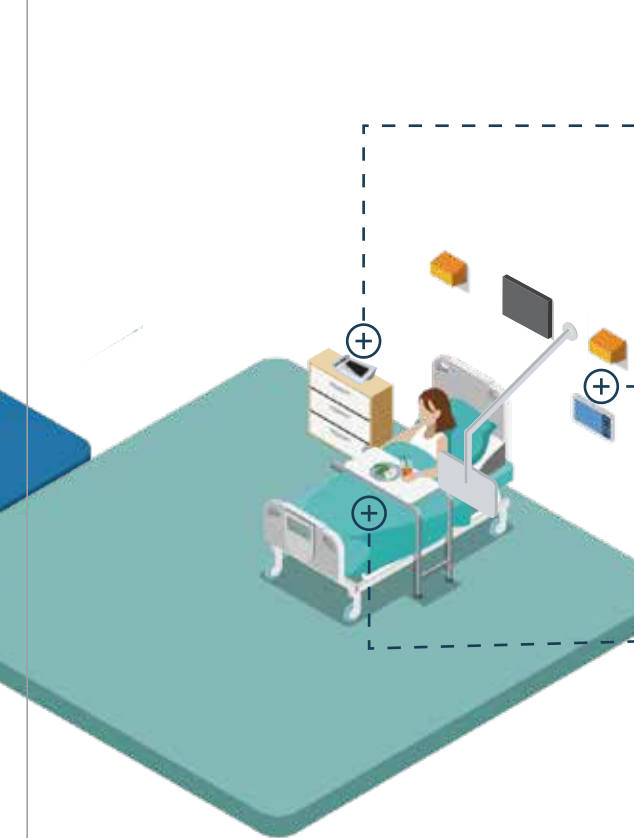
**Streamline and Paperless Workflow**

- Sync instant patient info and hospital data
- Reduce paper waste and provide real-time info access
- Cloud medication record system management

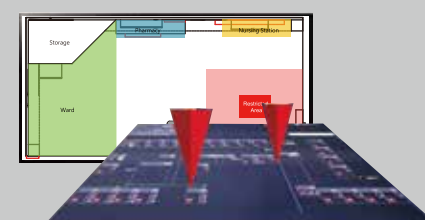


**"Point of Care" Bedside Terminal**

- Delivering information, communication entertainment and clinical applications
- "All in one" terminal or separate display and control box design for flexible infrastructure
- Perfect in applications and wards such as bedside point of care, dialysis, ICU and medical carts
- Medical grade compliance



**Application Product**



**Info Integration Platform**  
White Board Solution



**Mobile Workstation Solution**  
Geni-Cart and GeniTec Charger



**Digital Phone**  
RiPAC-10P1-H



**Bedside Card/  
Pick to Light**  
E Ink Series



**Room Status Display**  
VNS-10W01



**Bedside Terminal**  
Medi-View